



ONULIS
WRAP Pro PM Kit
User Guide



COPYRIGHT

Copyright © 2024 Onulis. All rights reserved.

No part of this document may be reproduced, stored in a retrieval system or database, translated into any human or computer language in any form, or transmitted in any form or by any means, mechanical, electronic, photocopying, recording, or otherwise, without prior written permission from Onulis. This document may be printed for internal use only. All copies shall retain a fully copy of this copyright notice.

TRADEMARKS

WRAP and Onulis are trademarks of Onulis. All other product names, trademarks, or registered trademarks are property of their respective owners. All product, company, or service names used are for identification purposes only. Use does not imply endorsement.

LIABILITY

The information provided herein is for reference only. Onulis may, at any time and without notice, make changes to this document. Onulis shall not be liable for errors contained herein or for incidental, consequential, indirect, or special damages, including, but not limited to, the implied warranties of merchantability and fitness for a particular purpose.

It is the responsibility of the user to determine that a material is safe, lawful, and suitable for the intended application, and to identify the proper material disposal method, consistent with local environmental regulations.

Except as provided in Onulis' standard terms and conditions of sale, Onulis shall not be responsible for any loss resulting from any use of products described herein.

WARRANTY

The WRAP Pro comes with a 1-Year Parts Warranty and Email Support. 1-Year Warranty only applies to the WRAP Pro machine. Consumables, such as Vats, Disposable Tubes, Filler Filters, and Light Shrouds, are covered for manufacturing defects for the first 30 days. Use of the incorrect Vat will void the WRAP Pro machine warranty and/or Vat warranty.

Maintenance Plan is voided by the use of third party consumables.

DISCLAIMERS

User acknowledges that the contents of this document and all Onulis products are subject to its standard terms and conditions of sale, available at <https://www.onulis.com/terms-and-conditions-of-sale>, and incorporated herein by reference.

Specifications in this document are subject to change without notice.

What's Included:

Ensure contents of container:

- Low Viscosity Vat (Qty 1)
- Disposable Tubes (Qty 8)
- Disposable Light Shroud (Qty 8)
- Disposable Filler Filter (Qty 8)
- Carbon Filters (1 Set)
- Plastic Flat Blade Scraper (Qty 1)

Table of Contents

The PM Kit is intended to ensure that your Onulis WRAP Pro continues to operate optimally. For normal to high WRAP Pro usage, an annual PM is recommended.

Always wear safety goggles, nitrile or neoprene gloves, and a proper face mask when handling resin.

Replacing Exhaust Fan Filters	1
Vat Disposal	2
Cleaning Machine	3

For any questions about your purchase, please reach out to the following:

General Inquiries: info@onulis.com

Support Request: maintenance@onulis.com

Purchases: orders@onulis.com

Digital copies of the User Guide can be found at: www.onulis.com/user-guides

REPLACING EXHAUST FAN FILTERS

1 Wear safety goggles, nitrile or neoprene gloves, and a proper face mask.



2 Remove thumbnuts and Exhaust Fan housing from machine.



3 Install new carbon filters.



4 Place housing back on machine. Vent holes **must** be facing downwards.



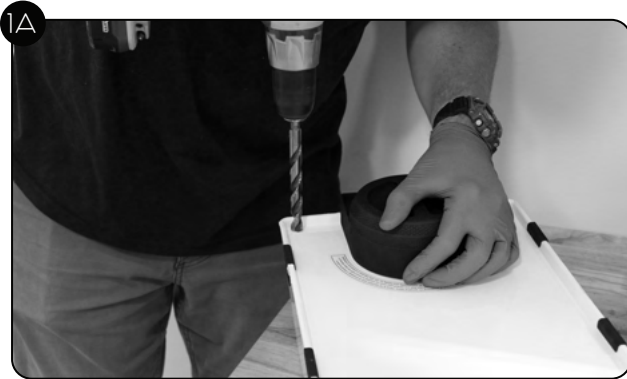
5 Fasten thumbnuts. Do not overtighten.

6 Repeat for all four fans.

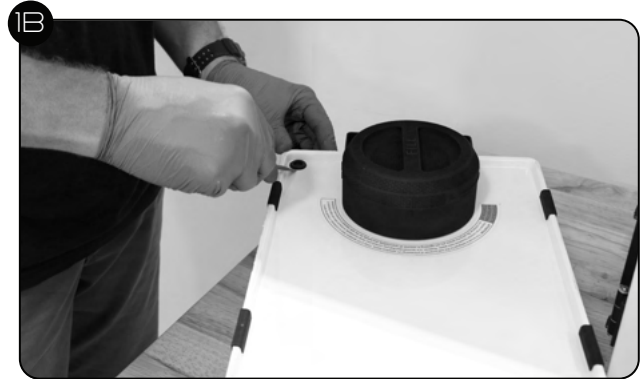
VAT DISPOSAL

Tools Needed:

- Drill (if Vat does not have a drain grommet)
- Flat Head Screwdriver (if Vat has drain grommet)
- Isopropyl Alcohol (IPA)
- Measuring Cup



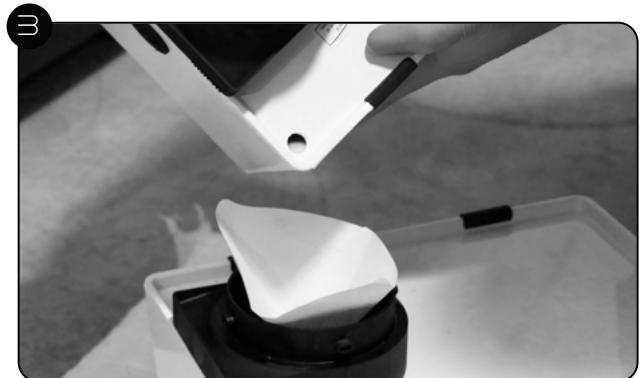
If your Vat does not have drain grommet, drill a hole in the top of the Vat.



If your Vat does have a drain grommet, use a flat head screwdriver to remove the grommet.



Pour resin from the old Vat into the new Vat, using a Disposable Filler Filter.



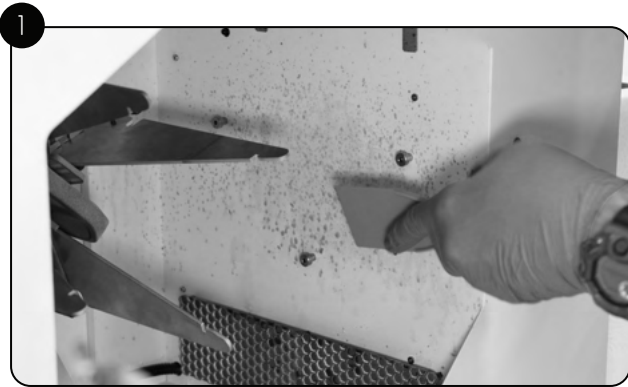
Pour $\frac{1}{4}$ cup of isopropyl alcohol (IPA) into the old Vat. Swish IPA around inside the Vat, until clean. Pour the resin and IPA mixture into the new Vat using a Disposable Filler Filter.

4 Once the old Vat is thoroughly clean and drained, it can be disposed.

CLEANING MACHINE

Tools Needed:

- Plastic Flat Blade Scraper
- Metal Razor
- Flat Head Screwdriver
- Isopropyl Alcohol (IPA)
- Paper Towels



Use the plastic flat blade scraper to remove any cured resin on the inside walls of the machine.



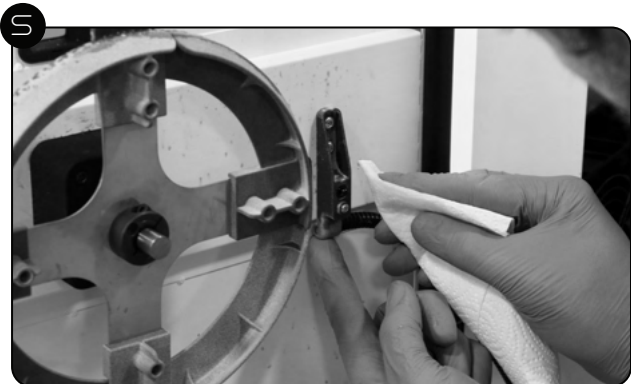
Remove Light Shroud and dispose.



Remove any resin on the inner top of machine, above Light Shroud.



Use a metal razor to remove any resin on the UV lights.



Inside Door

Use a paper towel and IPA to gently clean all 4 IR sensors on the inside of machine.
Sensor locations: inside door (1), left hand side of machine (1), back of machine (1), right hand side of machine (1).



Left Side of Machine



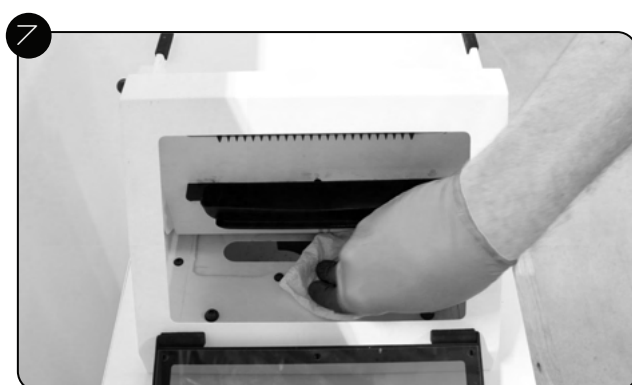
Back of Machine



Right Side of Machine



Use a paper towel and IPA to wipe inside of machine.



Flip down Viewing Window. Use a paper towel to clean top surface of machine.

